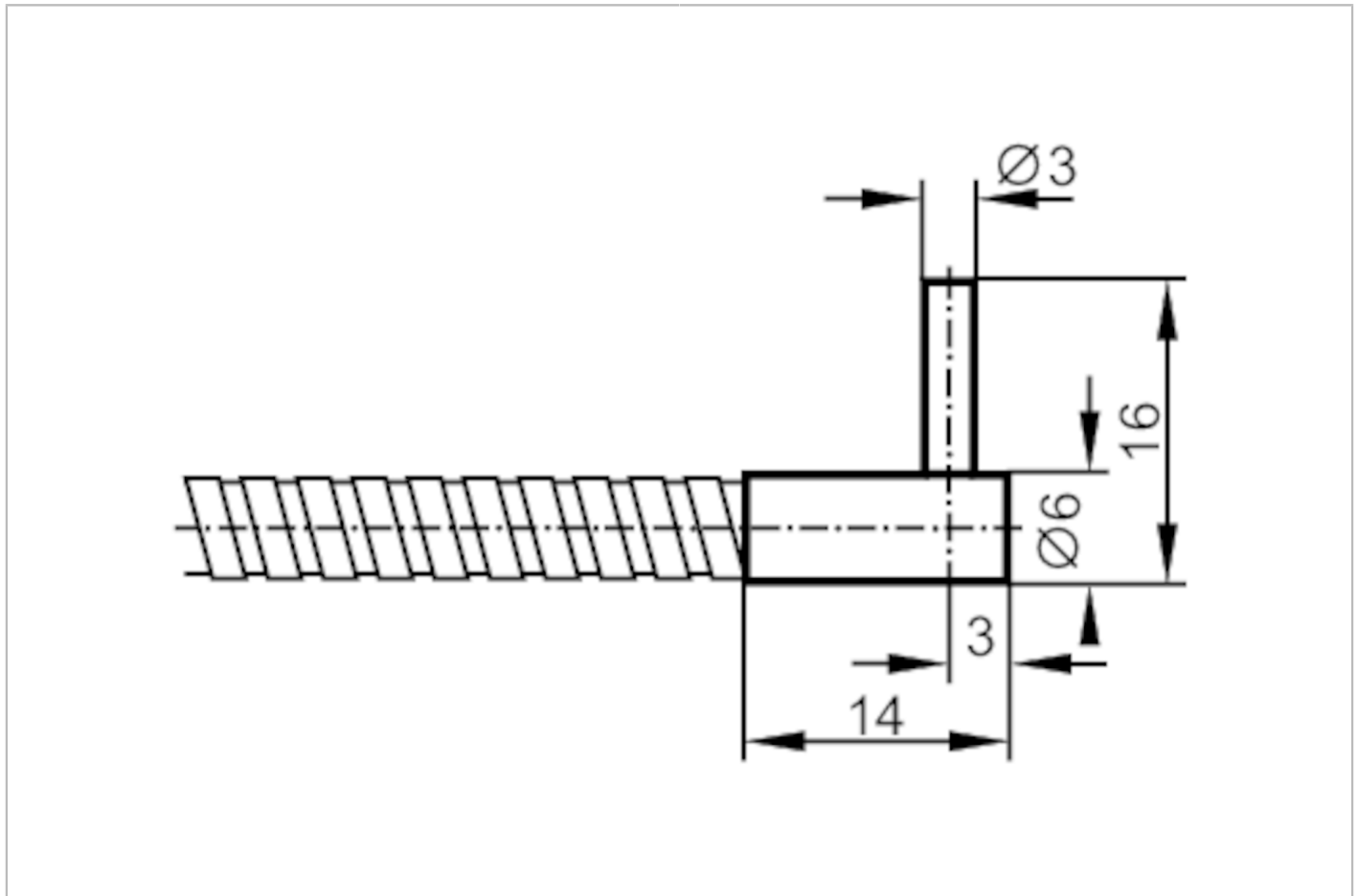




## Fiber optic through beam sensor

FE-00-A-A-R3



Application		
Function principle	Through-beam sensor	
Application	High temperature resistance; Robust design for use in harsh industrial environments	
Monitoring range		
Range with fiber optic amplifier type	OKF; OOF; OUF	
OKF		
Range of fiber optics	[mm]	120
OOF		
Range of fiber optics	[mm]	400
OUF		
Range of fiber optics	[mm]	120
Operating conditions		
Ambient temperature	[°C]	-40...290
Mechanical data		
Weight	[g]	69
Version of sensing head		angled
Sensing head diameter	[mm]	3
Sensing head length	[mm]	10
Total length	[mm]	600

# E20129



## Fiber optic through beam sensor

FE-00-A-A-R3

Min. bending radius	[mm]	20; (for fixed installation)
Fiber arrangement		●
Material		Adapter: ABS
Fiber material		glass
Fiber head material		aluminum
Fiber sheath material		aluminum
<b>Accessories</b>		
Items supplied		E20103
<b>Remarks</b>		
Pack quantity		1 pcs.