



Process sensors

Small transmitter with integrated DIN valve plug



Pressure sensors

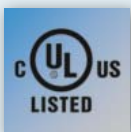


Robust welded stainless steel housing with high IP 67 protection rating

Measurement accuracy $< \pm 0.5\%$, repeatability $< \pm 0.05\%$

Extremely fast response: step response time of only 2 ms

Compact design (SW19) with process connection



Fast and easy exchange







Despite numerous alternatives valve plugs are still used for the connection of sensors in many plants. ifm's PT50xx series now also includes compact pressure sensors with an integrated valve plug. This makes it easy to integrate the sensors into existing plants and to use the existing wiring, which saves time and money.

Tried-and-tested technology and high IP protection rating



The PT50xx is based on the PT5 family which is perfectly tried and tested on the market. It features a robust thin-film measuring cell without a sealing ring in compact design with 19 mm across flats. With a suitable socket (e.g. E30447) the valve plug used here reaches IP 67 protection rating. In contrast to the IP 65 sensors with valve plug which are common on the market the operational reliability is higher.



Accessories

Type	Description	Order no.
	Adapter PX M16 – G 1/4 male	E30460
	Adapter PX M16 – R 1/4	E30461
	Adapter PX M16 – 1/4 NPT	E30462
	Adapter G 1/4 female – taper seal L8	E30463
	Adapter G 1/4 female – taper seal S8	E30464
	Adapter G 1/4 – G 1/2, stainless steel (320S17)	E30135

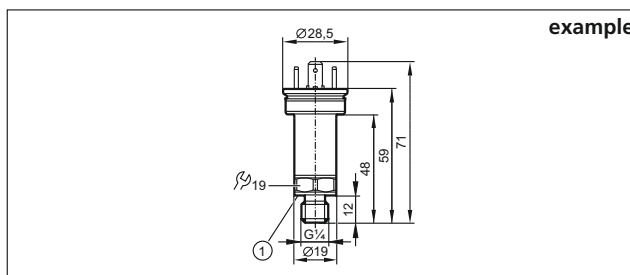
Connection technology

Type	Description	Order no.
	Socket, valve plug DIN 43650 A, IP 67	E30447
	Socket, valve plug DIN 43650 A, IP65	E10058

Measuring range relative pressure [bar]	Poverload max. [bar]	Pburst min. [bar]	Order no.
Output function 4...20 mA			
0...600	1500	2500	PT5060
0...400	1000	1700	PT5000
0...250	625	1200	PT5001
0...160	400	1100	PT5012
0...100	250	1000	PT5002
0...60	150	900	PT5023
0...40	100	800	PT5043
0...25	65	600	PT5003
0...16	40	450	PT5014
0...10	25	300	PT5004
0...6	15	200	PT5015

Common technical data		
Operating voltage	[V DC]	8.0...36
Reverse polarity protection		•
Accuracy / deviation (in % of the span)		
Linearity error		< ± 0.5
Linearity		< ± 0.1 (BFSL) / < ± 0.2 (LS)
Hysteresis		< ± 0.2
Repeatability		< ± 0.05
Long-term stability		< ± 0.1
Temperature coefficient (TEMPCO) in the temperature range -40...125 °C (in % of the span per 10 K)		
TEMPCO of zero + span		< ± 0.1 (0...80 °C) < ± 0.2 (-40...0 °C; 80...125 °C)
Medium temperature	[°C]	-40...125
Protection rating		IP 67
Materials in contact with the medium		FKM, high-grade stainless steel (17-4 PH/1.4542)
Step response time	[ms]	2

Dimensions



1) Sealing