



New Features Version 1.6



Table of contents

1. Overview of New Basic Functions
2. Overview of the improvements in usability
3. The most important new functions
 1. Process data representation of the IoT-Core IO-Link Master
 2. Representation of the events at all ifm IO-Link masters



1. Overview of New Basic Functions

- Cockpit for IoT Core IO-Link Master
 - Read and Display Process Data (PDIn)
 - PDout support - including detailed error handling - updating the Boolean PDout switching element with the current value if the device supports reading from PDout
- Show IO-Link events for sensors connected via the IoT-Core Master
- Improved security - vulnerability closed

Note: See the Release Notes for the complete list of changes.



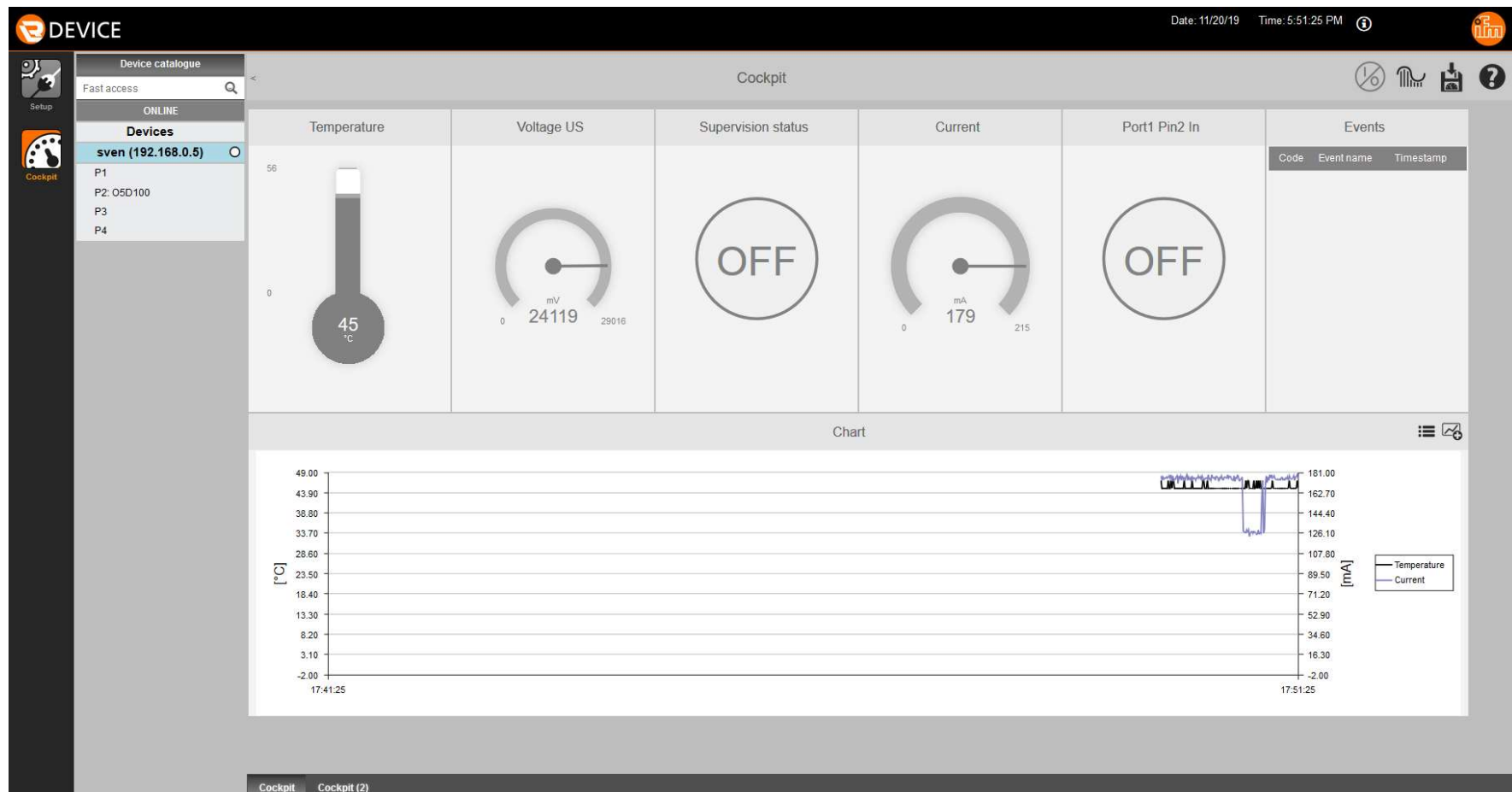
2. Overview of the improvements in usability

- Improved BLOB functionality; menu display depending on device functionality such as reading and writing
- More information for the user when writing process data to the device (PDOOut)
- Improved Cockpit Diagram settings - Maximum of 10 process data sources selectable, adjustable time format has been improved
- ProfiNet IO-Link masters are prioritized in the topology with the parameter "Hostname"
- Allow writing to an empty port, with manually set configuration, is possible even if the port has not yet been read

Note: See the Release Notes for the complete list of changes.



3.1 Process Data Representation of the IoT-Core IO-Link Master





3.1 Representation of Events at all ifm IO-Link Masters

The screenshot displays the LR DEVICE Cockpit interface. On the left, a sidebar shows the 'Device catalogue' with 'sven (192.168.0.5)' selected. The main area is divided into several sections: 'Distance' (18 cm), 'Switch state [OUT1]' (indicated by a green circle), and two 'Events' tables. The top-right 'Events' table is circled in red, with arrows pointing to it from labels 'Disappearing Event' and 'Appearing Event'. A red-bordered box highlights a zoomed-in view of the bottom 'Events' table, which includes a tooltip for the warning event: 'Warning: Object to near'. Below this tooltip is a label 'On mouseover = ErrorCode-Translation'. The bottom right of the interface features a graph showing 'Distance' and 'Switch state [OUT1]' over time.

Code	Event name	Timestamp
36021	-	17:54:18
36021	-	17:54:17
36016	nEA	17:54:17
36016	nEA	17:54:17

Code	Event name	Timestamp
36021	-	17:54:18
36021	-	17:54:17
36016	nEA	17:54:17
Warning: Object to near		17:54:17



Thank you for your attention!

