



edgeGateway: Reliable connection between sensors and IT



edgeDevices



Easy connection of the sensor level to the cloud

Translates sensor data into readable information

Two separate networks for maximum protection of the sensitive plant network

Housing and technology designed for use in demanding environments



Competent performer even in harsh conditions

The edgeGateway is the powerful, convenient and secure solution for transmitting data from the sensor level into the IT infrastructure.

Powerful because the edgeGateway can operate in the most harsh environments: Even at ambient temperatures of up to 60°C, the 1.3 GHz quad-core processor works at maximum performance level inside a housing that, like the 12.3 inch display, is sealed according to IP 65.

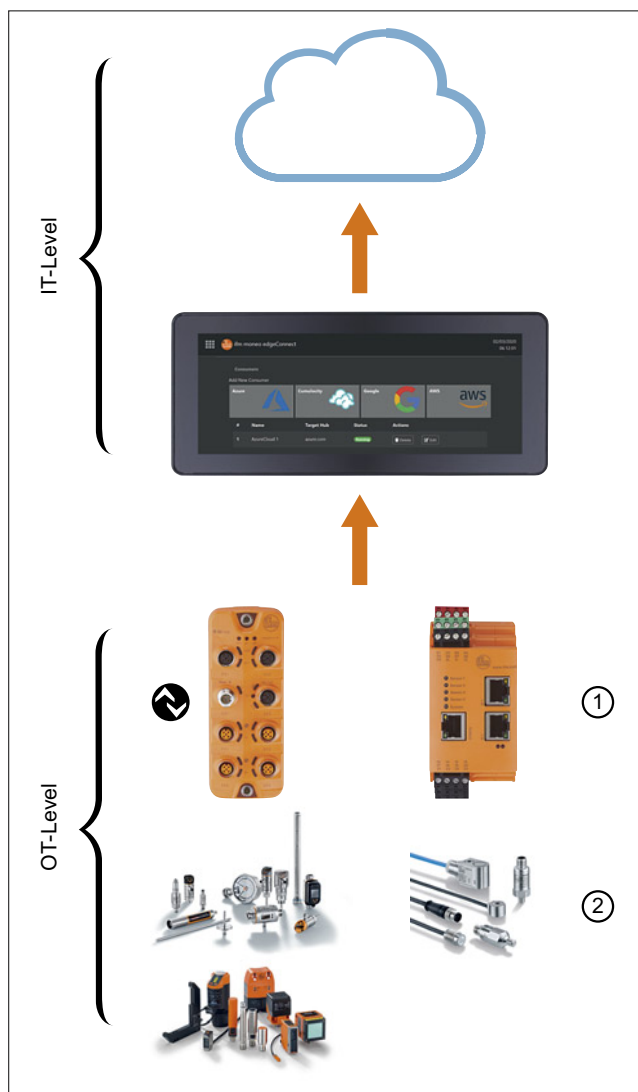
Convenient because setting-up of the edgeGateway is very easy and allows for all relevant plant data to be sent as readable information into different cloud platforms.

Secure because there are two independent network ports, one for the plant network and one for the IT infrastructure. The physical separation of the two ports ensures a high degree of safety for the sensitive machine data.



Direct connection to different clouds

The edgeGateway directly transmits the recorded and prepared data to the most common cloud platforms such as AWS, Microsoft Azure, Google Cloud and Cumulocity.



- 1) Middleware: ifm devices
 2) Sensors: ifm and other manufacturers
 IT = Information Technology
 OT = Operational Technology

Products

Description	Order no.
edgeGateway , colour display with touch function	AE1203
moneo edgeGateway Software LIC (required)	QM9104

Technical data		
Operating voltage	[V DC]	20...32
Display resolution		1280 x 480
Display size		12.3"
Display background illumination		LED
Protection rating		IP 65
Ambient temperature	[°C]	-35...60
Housing material		diecast aluminium, powder coated
Dimensions	[mm]	339.1 x 160.5 x 47.7

Accessories

Type	Description	Order no.
Installation		
	RAM mount set	EC1414
	Mounting frame and vibration absorber	EC0733
Connection technology		
	Device connection cable (voltage supply), 0.6 m, M12 connector	E70450
	Device connection cable (voltage supply), 2 m, open cable end	E70451
	edgeGateway / USB case, screw housing for USB cable including housing adapter	E70452
	USB connection cable M12 / USB, connection of displays and dialogue modules	EC2099

We reserve the right to make technical alterations without prior notice. · 02.2021