



Position sensors



# Farsighted: the OGD Long Range – new compact PMDLine sensor



Laser sensors / distance sensors

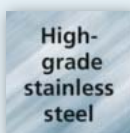
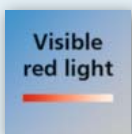


**Small compact design with standard M18 thread and time of flight technology**

**Excellent range of 1.5 m – independent of the colour**

**Sensors with laser protection class 1 – perfectly suited for the automotive industry**

**Visualisation and setting of the distance value via IO-Link and 2-colour display on the unit**



## Long-range time of flight sensor for demanding applications

The new PMDLine sensor with a compact stainless steel housing is distinguished by a very long range. It uses the innovative on-chip time-of-flight measurement system with PMD (photonic mixer device) technology. The class 1 laser sensor performs better than conventional red light sensors even in very demanding circumstances e.g. in detecting shiny metallic surfaces. The excellent reflection resistance and background suppression, together with a high excess gain, enable reliable operation. Typical applications are found in the automotive industry, conveying and materials handling.

## Easy handling

The switch point is easily set using the three buttons on the unit or alternatively via IO-Link, which also allows read-out of the current distance value.



Measuring range [mm]	Background suppression [m]	Output	Laser protection class	Spot Ø at max. range [mm]	Unit of measurement	Order no.
<b>Photoelectric distance sensor · M12 connector, complementary</b>						
25...1500	...20	PNP	1	5	mm, inch (selectable)	<b>OGD580</b>
25...1500	...20	NPN	1	5	mm, inch (selectable)	<b>OGD581</b>

## Accessories

Design	Description	Order no.
<b>Installation</b>		
	Mounting set for clamp mounting, M10 thread, diecast zinc	<b>E20718</b>
	Mounting set for clamp mounting, M10 thread, stainless steel	<b>E20870</b>
	Mounting set for clamp mounting, Ø 12 mm, diecast zinc	<b>E20836</b>
	Mounting set for clamp mounting, Ø 12 mm, stainless steel	<b>E21207</b>
	Rod, 100 mm, Ø 12 mm, M10 thread, stainless steel	<b>E20938</b>
	Cube for mounting on an aluminium profile, M10 thread, diecast zinc	<b>E20951</b>

## IO-Link

	USB IO-Link master for parameter setting and analysis of units Supported communication protocols: IO-Link (4.8, 38.4 and 230 kBit/s)	<b>E30390</b>
	Memory plug, parameter memory for IO-Link sensors	<b>E30398</b>
	IO-Link-master with PROFINET interface	<b>AL1100</b>
	LR DEVICE (supplied on USB flash drive) Software for online and offline parameter setting of IO-Link sensors and actuators	<b>QA0011</b>

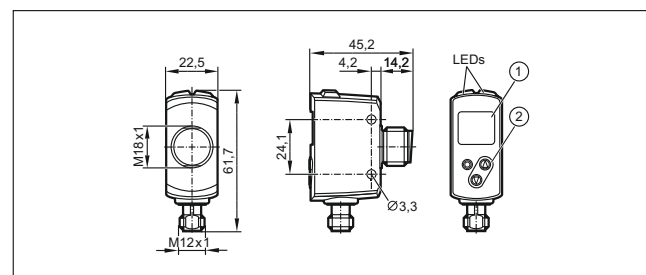
## Connection technology

	Socket, M12, 2 m black, PUR cable	<b>EVC001</b>
	Socket, M12, 5 m black, PUR cable	<b>EVC002</b>
	Socket, M12, 2 m black, PUR cable	<b>EVC004</b>
	Socket, M12, 5 m black, PUR cable	<b>EVC005</b>

## Further technical data

Operating voltage	[V DC]	10...30
Type of light / wave length		laser light 650 nm
Laser protection class		1
Output		H / D selectable
H = light-on / D = dark-on mode		
Protection rating, protection class		IP 65 / IP 67 III
Extraneous light immunity	[klx]	10
Switching status indication	LED	2 x yellow
Switching frequency	[Hz]	11
Current rating	[mA]	2 x 100
Current consumption	[mA]	75
Short-circuit protection, pulsed		•
Reverse polarity protection / overload protection		• / •
Ambient temperature	[°C]	-25...50
Materials	Housing	stainless steel (1.4404/316L)
	Lens	ABS; PPSU; PMMA glass

## Dimensions



- 1) alphanumeric display, 3-digit
- 2) programming buttons

## Wiring diagram

