



Position sensors

On the safe side: capacitive IIoT sensors for hazardous dust areas



Capacitive ATEX sensors



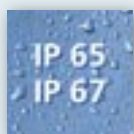
Level and position detection in hazardous areas

No switching amplifier required, reducing costs and complexity

Robust and impact resistant housing

Easy connection via M12 connector (straight or angled)

Easy remote parameter setting and process monitoring



Maximum protection ensures safe operation

The robust and impact resistant housing of the capacitive ATEX sensors ensures safe operation in hazardous dust areas (ATEX zone 22). No expensive switching amplifiers are required. Level and position can be monitored without any risk, as no combustible energy from the sensor can penetrate into the hazardous area, even in long-term use.

Intelligent remote diagnostics and control

The ifm sensors are not only the first on the market to feature a standard M12 connector, they are also the first ones featuring IO-Link. This enables safe and convenient remote parameter setting, which is a great advantage e.g. in case of high tanks or limited space. Another advantage is the digital process value transmission which ensures for example that tanks are filled as required. The sensors can be used to easily replace currently installed sensors and used without IO-Link thanks to their backward compatibility.



The all-rounder for position and process monitoring

The capacitive IO-Link ATEX sensors have been designed especially for zone 22 hazardous dust areas. The well-known M30 sensors with a high sensing range are found in many applications in position and process monitoring.

Examples include the non-contact detection of grain in mills or silos and position detection of bakery products, wood, plastic parts or even pasta. This makes the sensors real all-rounders.

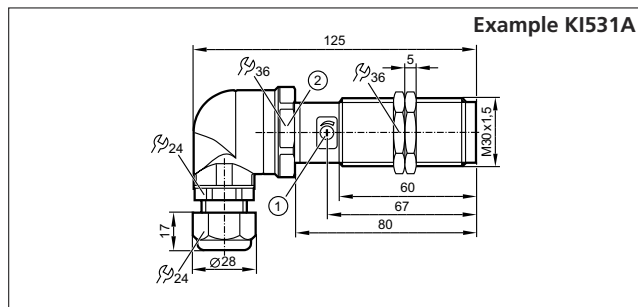
More flexibility with IO-Link

The sensors are the first to feature an integrated IO-Link chip, allowing them to deliver their full potential. Process values can be transferred in real-time and the sensors can be conveniently adapted to the application remotely.

Put an end to extensive stock-keeping

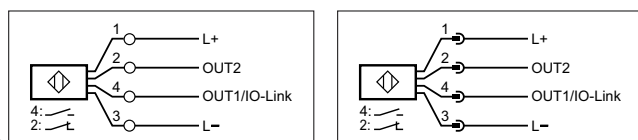
Each sensor can be set to PNP or NPN as well as NO or NC, which is an advantage especially for overflow or dry running applications. Integrated time functions can be used to implement automatic replenishment without an upstream controller. The complementary switching output of the sensors can be set directly on the unit via a potentiometer or via IO-Link. The potentiometer can also be deactivated to prevent external influences.

Dimensions



- 1) Potentiometer
- 2) Tightening torque 10 Nm

Wiring diagram



KI530A, KI531A

KI532A, KI533A

Type	Description	Order no.
------	-------------	-----------

Use in hazardous dust areas (ATEX zone 22)

	Type M30 with terminals; straight	KI530A
	Type M30 with terminals; angled	KI531A
	Type M30 with M12 connector; straight	KI532A
	Type M30 with M12 connector; angled	KI533A

Common technical data

Operating voltage	[V DC]	10...30
Current consumption	[mA]	200
Output function		complementary
Protection rating		IP 65, IP 67
Sensing range [mm]		15
Real sensing range (Sr)		± 10 % of Sn
Setting range		3..26
ATEX labelling		II 3D Ex tc IIIC T90°C Dc X

Accessories

Type	Description	Order no.
------	-------------	-----------

Installation

	Mounting adapter POM; G 1 1/2 external thread	E11033
	Mounting adapter PVDF; G 1 1/2 external thread	E11034
	Mounting adapter POM; G 1 1/4 external thread	E11035
	Mounting adapter PVDF; G 1 1/4 external thread	E11036
	Mounting set, fixture for M30 threads; stainless steel	E20873
	Angle bracket for M30 threads; stainless steel	E10737

Connection technology

	Connection cable M12 / M12, 2 m, PUR, ATEX approval	EVC07A
	Connection cable M12 / M12, 5 m, PUR, ATEX approval	EVC12A