



Position sensors

Full-metal sensors for use in the smallest of spaces



Inductive sensors



High-quality stainless steel housing

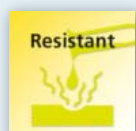
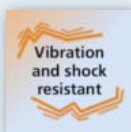
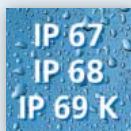
Compact dimensions for use in the smallest of spaces

Large temperature range up to 100 °C

Easy connection via M12 connector

Thread area can be entirely used

IP 65 to IP 69K for greater reliability



Full-metal sensors

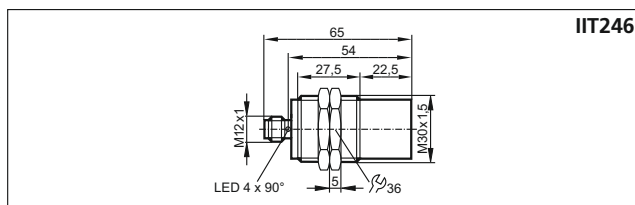
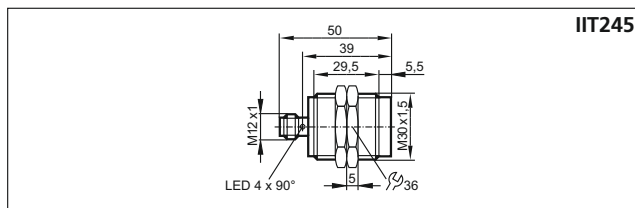
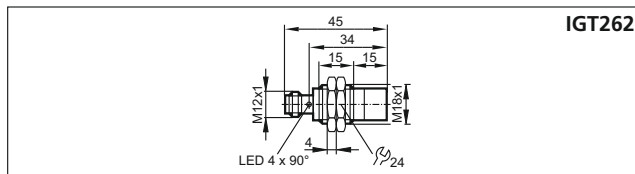
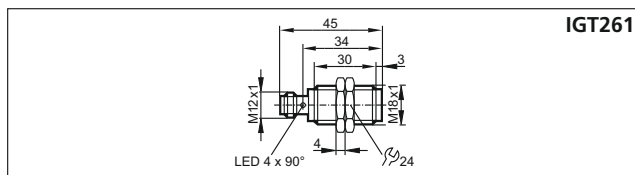
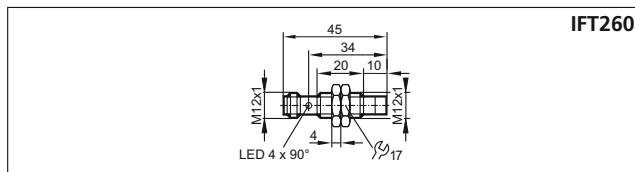
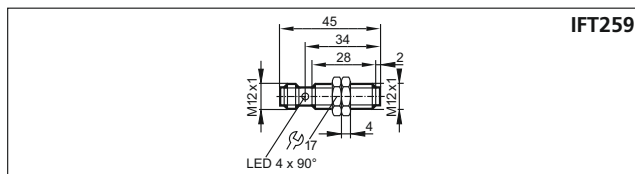
Wherever sensors have to cope with harsh operating conditions, full-metal sensors are the right choice. Even temperatures up to 100 °C do not affect reliable end position detection. The high-quality stainless steel housing in combination with the ecolink connector allows for permanent use even when in contact with cleaning agents and humidity. Increased sensing ranges guarantee reliable detection and provide sufficient excess gain.

The compact dimensions and the possibility to mount sensors of the same type directly next to each other allow for permanent and reliable end position detection even in the smallest of spaces.

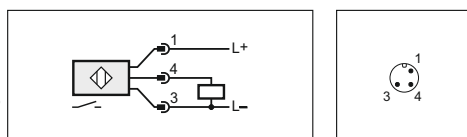


Type	Total length [mm]	Sensing range [mm]	f [Hz]	Protection rating	Ambient temperature [°C]	Order no.
M12 connector · output function NO						
M12 x 1	45	5 qf	250	IP 65, IP 66, IP 67, IP 68, IP 69K	0...100	IFT259
M12 x 1	45	6 nf	250	IP 65, IP 66, IP 67, IP 68, IP 69K	0...100	IFT260
M18 x 1	45	10 qf	200	IP 65, IP 66, IP 67, IP 68, IP 69K	0...100	IGT261
M18 x 1	45	12 nf	200	IP 65, IP 66, IP 67, IP 68, IP 69K	0...100	IGT262
M30 x 1.5	50	18 qf	100	IP 65, IP 66, IP 67, IP 68, IP 69K	0...100	IIT245
M30 x 1.5	65	25 nf	100	IP 65, IP 66, IP 67, IP 68, IP 69K	0...100	IIT246

Dimensions



Wiring diagram



Further technical data

Operating voltage	[V DC]	10...30
Current rating	[mA]	100
Reverse polarity protection		•
Short-circuit protection		•
Protection class		III
Housing material		high-grade stainless steel (316L)
Switching status indication	[LED]	yellow (4 x 90°)

Accessories

Type	Description	Order no.
	Angle bracket for M12 design, stainless steel	E10735
	Angle bracket for M18 design, stainless steel	E10736
	Angle bracket for M30 design, stainless steel	E10737

Connection technology

Type	Description	Order no.
	Socket, M12, 4 poles 5 m, grey, MPPE cable	EVF001
	Socket, M12, 4 poles 2 m, grey, MPPE cable	EVF064
	Socket, M12, 4 poles 5 m, grey, MPPE cable	EVF004
	Socket, M12, 4 poles 2 m, grey, MPPE cable	EVF067