



Position sensors



OGD with plastic front lens: distance measurement with added safety

Laser sensors / distance sensors

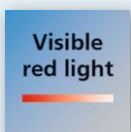


High process reliability thanks to shatterproof plastic front lens

2 in 1: simultaneous output of distance value and reflectivity

Identification and sorting of objects based on reflectivity

Process values shown on 2-colour display and sent via IO-Link



Everything under control thanks to OGD Reflectivity with plastic lens

The OGD Reflectivity features a switching output for the reflectivity value in addition to providing distance information. This increases the reliability of process control: For example, it not only detects whether toppings have been added to a deep-frozen product, but also determines whether the correct topping has been used based on its reflectivity.

In addition, the OGD Reflectivity now features a plastic front lens to eliminate the possibility of glass splintering, especially in food applications. This not only ensures reliable process control, but also a high degree of process safety. All parameters of the sensor can be set as usual using three pushbuttons and are clearly indicated on the two-colour display. Parameter setting and reading is also possible via IO-Link.



Measuring range [mm]	Background suppression [m]	Output	Laser protection class	Spot Ø at max. range [mm]	Unit of measurement	Order no.
----------------------	----------------------------	--------	------------------------	---------------------------	---------------------	-----------

Photoelectric distance sensor · M12 connector

80...1,500	...20	PNP	1	5	cm, refl (selectable)	OGD583
------------	-------	-----	---	---	-----------------------	---------------

Accessories

Type	Description	Order no.
------	-------------	-----------

Installation

	Mounting set for clamp mounting, M10 thread, diecast zinc	E20718
	Mounting set for clamp mounting, M10 thread, stainless steel	E20870
	Mounting set for clamp mounting, Ø 12 mm, diecast zinc	E20836
	Mounting set for clamp mounting, Ø 12 mm, stainless steel	E21207
	Mounting rod, 100 mm, Ø 12 mm, M10 thread, stainless steel	E20938
	Cube for mounting on an aluminium profile, M10 thread, diecast zinc	E20951

IO-Link

	USB IO-Link master for parameter setting and analysis of units Supported communication protocols: IO-Link (4.8, 38.4 and 230 kbits/s)	ZZ1060
	Memory plug, parameter memory for IO-Link sensors	E30398
	IO-Link master with PROFINET interface	AL1100
	moneo configure SA (Stand alone) licence, software for online and offline parameter setting of IO-Link devices including maintenance and support until the end of the following year	QMP010

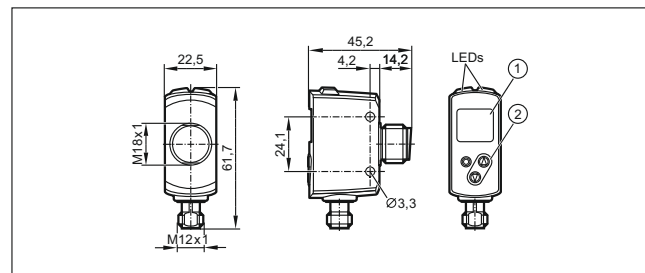
Connection technology

	M12 socket, 2 m black, PUR cable	EVC001
	M12 socket, 5 m black, PUR cable	EVC002
	M12 socket, 2 m black, PUR cable	EVC004
	M12 socket, 5 m black, PUR cable	EVC005

Further technical data

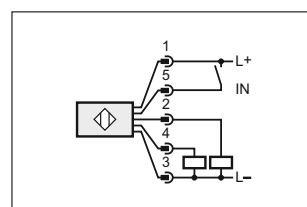
Operating voltage	[V DC]	10...30
Type of light / wave length		Laser light 650 nm
Laser protection class		1
Output	L = Light-on / D = Dark-on mode	L / D selectable
Protection rating, protection class		IP 65 / IP 67 III
Extraneous light immunity	[klx]	10
Switching status indication	LED	2 x yellow
Switching frequency	[Hz]	11
Current rating	[mA]	2 x 100
Current consumption	[mA]	75
Short-circuit protection, pulsed		•
Reverse polarity protection / overload protection		• / •
Ambient temperature	[°C]	-25...50
Materials	Housing	Stainless steel (316Ti/1.4404); ABS; PPSU; PMMA
	Lens	PMMA

Dimensions



- 1) Alphanumeric display, 3 digits
- 2) Programming buttons

Wiring diagram



We reserve the right to make technical alterations without prior notice. · 11.2020