



Process sensors

# Small transmitter with integrated DIN valve plug



Pressure sensors

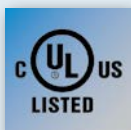


**Robust welded stainless steel housing with high IP 67 protection rating**

**Measurement accuracy  $< \pm 0.5\%$ , repeatability  $< \pm 0.05\%$**

**Extremely fast response: step response time of only 2 ms**

**Compact design (SW19) with process connection**



## Fast and easy exchange

Despite numerous alternatives valve plugs are still used for the connection of sensors in many plants. ifm's PT50xx series now also includes compact pressure sensors with an integrated valve plug. This makes it easy to integrate the sensors into existing plants and to use the existing wiring, which saves time and money.

## Tried-and-tested technology and high IP protection rating



The PT50xx is based on the PT5 family which is perfectly tried and tested on the market. It features a robust thin-film measuring cell without a sealing ring in compact design with 19 mm across flats. With a suitable socket (e.g. E30447) the valve plug used here reaches IP 67 protection rating. In contrast to the IP 65 sensors with valve plug which are common on the market the operational reliability is higher.



## Accessories

Type	Description	Order no.
	Adapter PX M16 – G 1/4 male	<b>E30460</b>
	Adapter PX M16 – R 1/4	<b>E30461</b>
	Adapter PX M16 – 1/4 NPT	<b>E30462</b>
	Adapter G 1/4 female – taper seal L8	<b>E30463</b>
	Adapter G 1/4 female – taper seal S8	<b>E30464</b>
	Adapter G 1/4 – G 1/2, stainless steel (320S17)	<b>E30135</b>

## Connection technology

Type	Description	Order no.
	Socket, valve plug DIN 43650 A, IP 67	<b>E30447</b>
	Socket, valve plug DIN 43650 A, IP65	<b>E10058</b>

Measuring range relative pressure [bar]	Poverload max. [bar]	Pburst min. [bar]	Order no.
---	----------------------------	-------------------------	--------------

### Output function 4...20 mA

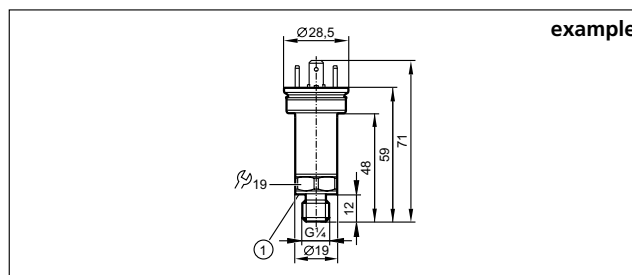
0...600	1500	2500	<b>PT5060</b>
0...400	1000	1700	<b>PT5000</b>
0...250	625	1200	<b>PT5001</b>
0...160	400	1100	<b>PT5012</b>
0...100	250	1000	<b>PT5002</b>
0...60	150	900	<b>PT5023</b>
0...40	100	800	<b>PT5043</b>
0...25	65	600	<b>PT5003</b>
0...16	40	450	<b>PT5014</b>
0...10	25	300	<b>PT5004</b>
0...6	15	200	<b>PT5015</b>

### Common technical data

Operating voltage	[V DC]	8.0...36
Reverse polarity protection		•
Accuracy / deviation (in % of the span)		
Linearity error		< ± 0.5
Linearity		< ± 0.1 (BFSL) / < ± 0.2 (LS)
Hysteresis		< ± 0.2
Repeatability		< ± 0.05
Long-term stability		< ± 0.1
Temperature coefficient (TEMPCO) in the temperature range -40...125 °C (in % of the span per 10 K)		
TEMPCO of zero + span		< ± 0.1 (0...80 °C) < ± 0.2 (-40...0 °C; 80...125 °C)

Medium temperature	[°C]	-40...125
Protection rating		IP 67
Materials in contact with the medium		FKM, high-grade stainless steel (17-4 PH/1.4542)
Step response time	[ms]	2

## Dimensions



1) Sealing