



Position sensors

Huge IO-Link performance in a tiny M8 housing



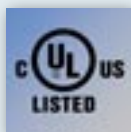
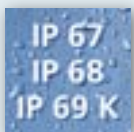
Inductive sensors



Long sensing range, minimal space required

Easy installation and replacement thanks to standard M8 connector

- The ideal solution where space is at a premium: remote IO-Link parameter setting
- Process reliability guaranteed by switch point monitoring for detection of wear
- Diagnostic functions, such as internal unit temperature monitoring, help prevent failures



Excellent performance in a small housing

With 3 mm (flush) and 6 mm (non-flush), the sensing range is much than the standard of conventional M8 sensors. Thanks to the high switching frequency of 600 Hz, the sensors also solve demanding position detection tasks where space is limited.

More performance thanks to O-Link

In addition to the switching output, the sensor has an IO-Link interface. Convenient remote parameter setting is also possible. Thanks to the high precision, the user can monitor the switch point to the nearest millimetre and detect mechanical deviations e.g. caused by wear at an early stage. Extensive diagnostic functions, such as integrated unit temperature monitoring, provide additional safety in the installation by sending early warnings in critical applications.



Type	Installation	Measuring range [mm]	Setting range [mm]	Correction factor	Order no.
	flush	0.3...3	0.56...2.8	Steel 1 · stainless steel 0.7 · brass 0.4 aluminium 0.4 · copper 0.3	IE5457
	non flush	0.6...6	1.23...5.61	Steel 1 · stainless steel 0.7 · brass 0.5 aluminium 0.5 · copper 0.4	IE5456

Accessories

Design	Description	Order no.
--------	-------------	-----------

Installation

	Mounting bracket for M8 housing, stainless steel	E10734
	Mounting clamp for M8 housing, aluminium, black anodized	E10221
	Mounting clamp for type M8, PC	E11521

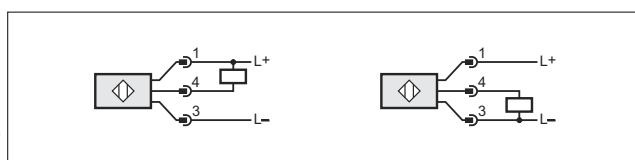
IO-Link

	IO-Link master DataLine, USB	AL1060
	Memory plug, parameter memory for IO-Link sensors	E30398
	moneo configure SA (Stand-alone) licence, software for online and offline parameter setting of IO-Link devices including maintenance and support until the end of the following year	QMP010
	IO-Link display	E30391

Connection technology

	Connection cable, M8, 3-pole, 2 m, black, PUR cable	EVC268
	Connection cable, M8, 3-pole, 5 m, black, PUR cable	EVC269

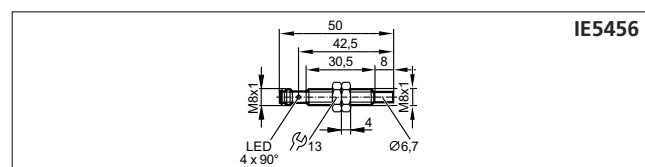
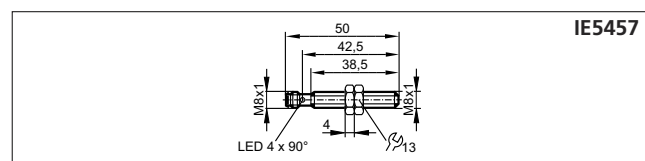
Wiring diagram



Further technical data

Design	M8 x 1	
Housing length	[mm]	50
Electrical design	DC PNP / NPN can be set via IO-Link	
Output function	NC / NO adjustable via IO-Link	
Operating voltage	[V DC]	10...30
Current rating	[mA]	100
Reverse polarity protection	yes	
Short-circuit protection	yes	
Protection rating	IP 65 / IP 66 / IP 67 / IP 68 / IP 69 K	
Protection class	III	
Switching frequency DC	[Hz]	600
Ambient temperature	[°C]	-40...75
Switching status indication	[LED]	4 x yellow
IO-Link process data (cyclic)	Function	Bit length
	Process value	16
	Device status	4
	Binary switching information	2
IO-Link process data (acyclical)	Switching cycles counter, switch-on cycles counter, operating hours counter, internal temperature, application-specific marking	

Dimensions



We reserve the right to make technical alterations without prior notice. · 04.2021