



Analogue meets IO-Link

Flexibly configurable analogue IO-Link module

- 4 ports, each with one analogue input and one analogue output
- Connection of sensor and actuator via one port using Y-splitters possible
- Freely configurable: current or voltage signals
- IO-Link communication for easy integration into the controller
- Robust housing with high protection rating



ifm – close to you!

Description	Order no.	
	Coolant (orange)	Food (grey)
Analogue IO-Link module		
4x analogue In / 4x analogue Out	AL2350	AL2250

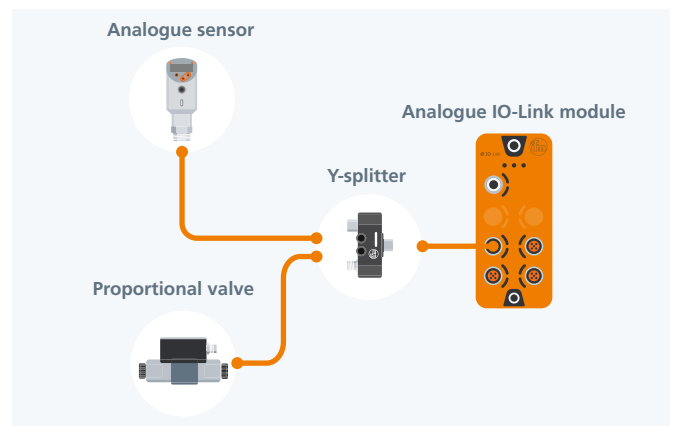
Analogue application scenarios

The analogue IO-Link module combines proven analogue technology with modern IO-Link communication, bridging the gap between existing systems and digital automation. Typical applications include water and wastewater management, where levels are detected and valves are controlled automatically – all via a single port. The module also enables the reliable control of flow, pressure and temperature in server cooling systems. This allows existing analogue sensors and actuators to be easily and efficiently integrated into the IO-Link infrastructure.

Operating principle

Four freely configurable ports, each with an analogue input and an output, enable maximum flexibility. Using a Y-splitter, the sensor and actuator can be operated simultaneously on one port, while the analogue signals are conveniently integrated into the controller via IO-Link. For hygiene-sensitive applications, a robust food version with IP69, stainless steel sockets and food-grade housing material is also available – ready for tough everyday industrial use.

Technical data	
Number of ports	4
Inputs	4x analogue
Outputs	4x analogue
IO-Link ports	1
Input/output function (configurable)	4...20 mA / 0...20 mA / 0...10 V / 0...5 V
Current rating of the outputs [mA]	500
Coolant (orange) Protection rating Housing Socket/connector	IP67 polyamide nickel-plated brass
Food (grey) Protection rating Housing Socket/connector	IP69 polyamide stainless steel

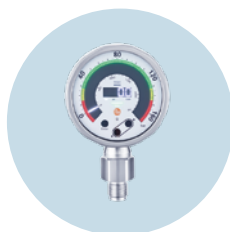


BEST FRIENDS

We reserve the right to make technical alterations without prior notice. - 04.2026
ifm electronic gmbh · Friedrichstr. 1 · 45128 Essen



IO-Link master
Field-compatible Performance-Line, up to 2 A per port



Electronic manometer
Analogue display and output of measured values



24 V switched-mode power supply
Power supply of sensors and actuators



For further technical details, please visit:
ifm.com/fs/AL2350