



Systems for mobile machines

Central management and monitoring of global machine fleets



mobileIoT

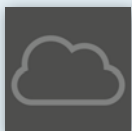


Direct connection from the control centre to the machine on site

Hardware and cloud solution matched to each other for easy implementation within a few minutes

Improved service logistics thanks to early diagnostics

Evaluate machine data and use it to optimise your fleet



ifm mobileIoT Suite – management and services

With the mobileIoT Suite, you can keep an eye on your machine fleet and its operating status. This helps you to react to maintenance requirements in good time. The system is suitable for fleet leasing companies and for OEMs who want to add value to their customer offer by providing high-precision maintenance after sales services. Adaptations to changing customer requirements, such as the configuration of a machine, can be implemented very quickly.

mobileIoT DataPortal

You can access all relevant information about your machines in the mobileIoT DataPortal. Generate reports and adapt your own dashboards or those of your customers. Analysis tools and historical data help you to predict changes in the condition of your machines, plan maintenance measures in time and avoid expensive machine failure.



A global machine management requires hardware which transfers the data to the cloud:

CR3145 – mobileData

The device is connected to the CANbus. If the cloud functionality is activated, the information communicated via CANbus is transferred to the cloud by means of the CANmonitor mode.

Device specification:

- 3G modem (gsm / gprs / edge / umts / hsdpa)
- internal cell & gnss antennas
- gps / glonass (up to 56 channels)
- CAN interface
- gyro and accelerometer
- IP 67
- power supply: 6 to 32 V DC
- CE, E1 and fcc marked

CR3150 – mobileMaintenance/3G

Similar to the CR3145, this device enables easy connection between machine and cloud. In addition, the CR3150 allows an OTA real-time connection to your CANbus or even directly to your control system.

The device specification is the same as for CR3145, in addition:

- 2nd CANbus interface
- WLAN and Bluetooth interface with internal antennas
- OTA real-time connection to the machine
- firmware and software updates via WLAN/Bluetooth

CR3156 mobileMaintenance/4G/EU

CR3157 mobileMaintenance/4G/AM

The CR3156/7 uses next-generation radio technology, allowing connection of the machines to the 4G networks within the EU or America.

The device specification is the same as for CR3145, in addition:

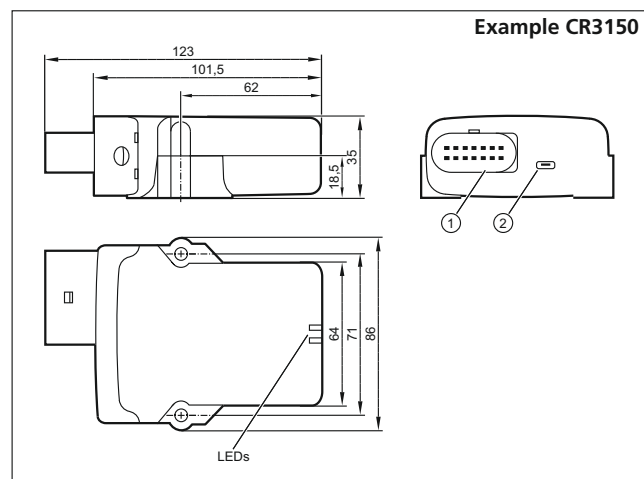
- 4G modem (depending on the region)
- external antennas for radio and GPS
- bigger internal storage for machine updates
- firmware and software updates via radio

Products

Description	Order no.
Modems	
mobileData	CR3145
mobileMaintenance/3G	CR3150
mobileMaintenance/4G/EU	CR3156
mobileMaintenance/4G/AM	CR3157
Connection technology	
Connection cable, Micro-Timer connector, 2 x M12, 0.6 m	EC3148
Connection cable, Micro-Timer connector, 2 m	EC3146
Wirable plug, incl. contacts	EC3147
Contracts	
mIoT – Data Basic 3,500 data points per month, 10h real-time connection per year	CZ0100
mIoT – Data Small 35,000 data points per month, 10h real-time connection per year	CZ0101
mIoT – Data Medium 500,000 data points per month, 30h real-time connection per year	CZ0102
mIoT – Data Large 4.77 million data points per month, 30h real-time connection per year	CZ0103

Data point: storage of an individual measurement point in the cloud

Dimensions



- 1) Micro Timer II connector
- 2) USB socket (Micro-AB type)